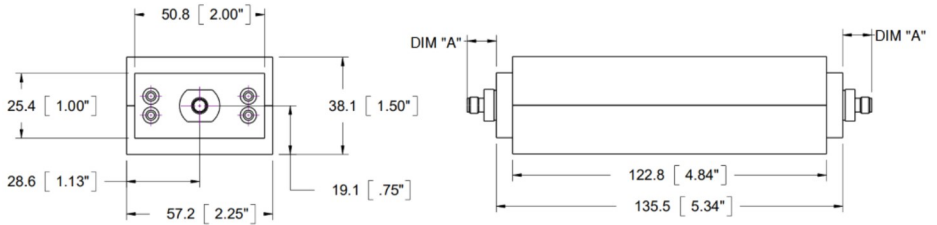
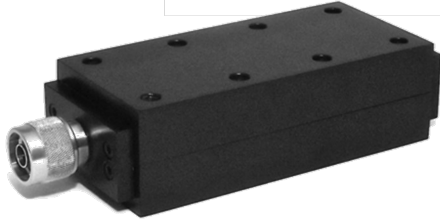


Fixed Coaxial Attenuator

WA61 & WA62

WA61: DC – 4 GHz
WA62: DC – 8.5 GHz

150 WATTS



Features

Type N or DIN 7/16 stainless steel M/F connectors per MIL-STD-348A, interface dimensions mate nondestructively with MIL-PRF-39012. Designed to meet MIL-DTL-3933 environmental specification. *Flat body with 6-32 mounting holes for conductive cooling.*

Specifications

Nominal Impedance: 50 ohms.

Frequency Range: WA61: DC - 4 GHz.
 WA62: DC - 8.5 GHz.

Nominal dB Values: 3 - 40 dB

Power Coefficient: < 0.0006 dB/dB/W;
 Unidirectional in power.

Power Rating: **150 W** maximum rated average power with case temperature held to +100° C using conductive heat sink. **5 kW** peak power (5 µsec pulse width, 1.5% duty cycle).

Temperature Range: -55°C to +100°C.

Temperature Coefficient: <0.0004 dB/dB/°C.

Construction: Black aluminum alloy body with passivated stainless steel connectors. Gold plated beryllium copper or stainless steel contacts. RoHS Compliant.

Calibration: Insertion Loss and VSWR performed across frequency range. Calibration test data available at additional cost.

Low Intermodulation Option: Add -LIM after connector option to specify low intermodulation.

Standard Nominal Values and Deviations:

Attenuation (dB)	Accuracy ± dB		
	WA61	WA62 (0 - 4 GHz)	WA62 (4 - 8.5 GHz)
3 - 30	0.4	0.4	0.75
40	0.5	0.5	1.0

Maximum VSWR:

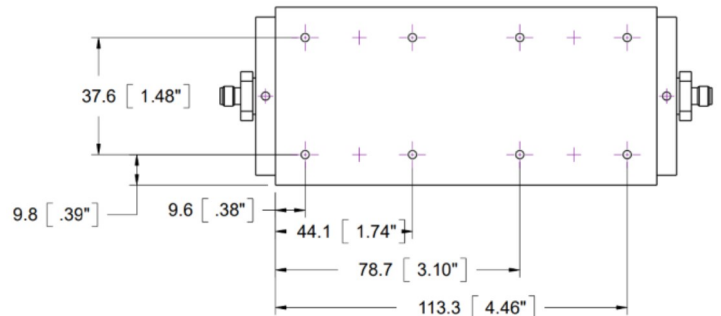
Frequency (GHz)	VSWR	
	WA61	WA62
DC - 4.0	1.2	1.2
4.0 - 8.5	N/A	1.35

Dimensions:

Connector Type (- code)	Length
	Dimension 'A'
N-Type F -03	14.9 (.57)
N-Type M -04	22.7 (.89)
DIN 7/16 F -07	30.5 (1.2)
DIN 7/16 M -08	31.8 (1.25)

Weight: 0.8 (28.2)
Height: 38.1 (1.5)
Width: 57.2 (2.25)

Note: Dimensions are given in mm (in), or kg (oz). Weight figure is nominal, with our standard connector configuration. Additional connector options may be available.



WEINSCHEL ASSOCIATES

TEL: 877.948.8342 / 301.963.4630 ♦ Fax: 301.963.8640

WEB: <http://www.WeinschelAssociates.com>

EMAIL: sales@WeinschelAssociates.com

